

# hARTslane



ANNUAL REPORT 2023

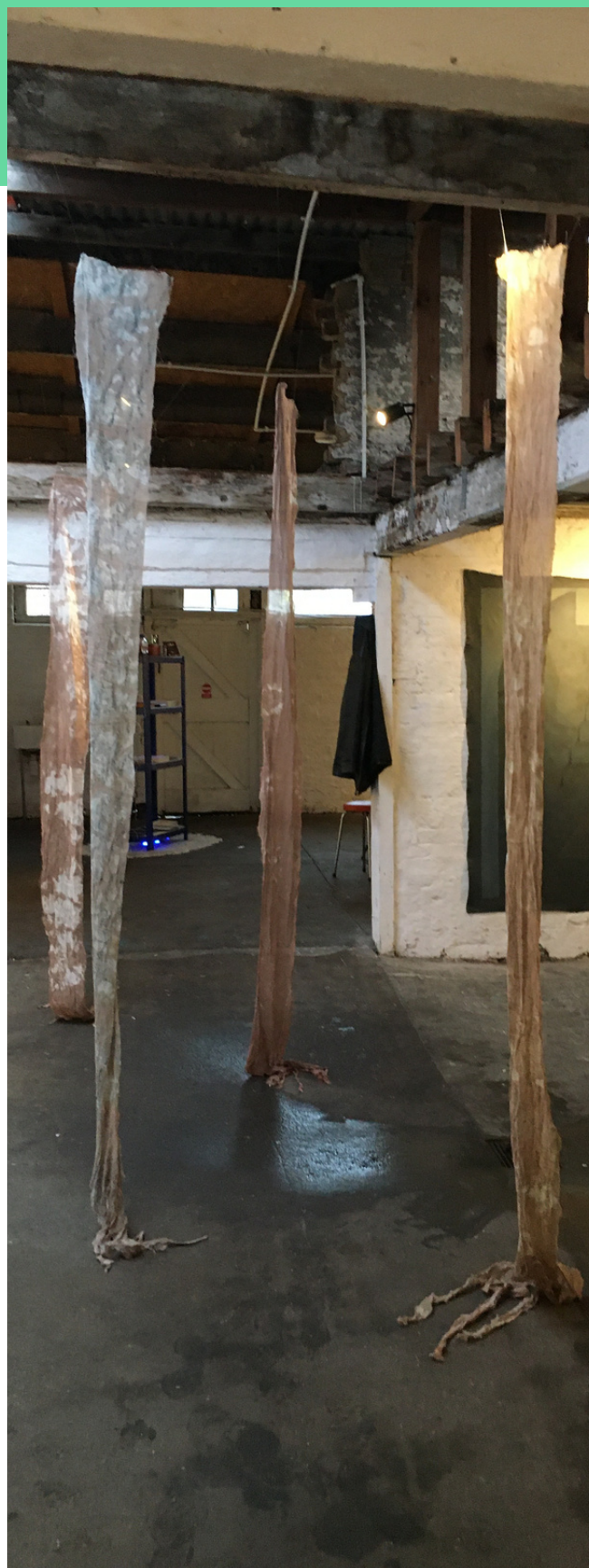
# REVIEW OF THE YEAR

Compared to the last couple of years, 2023 may look like a quiet year for hARTslane. But as we take time now to reflect on the last 12 months, we realise that the past year has been a time of seeding. Hopefully in 2024 we'll see some of those seeds grow and bring amazing new things!

We started the year by welcoming a new **Advisory Group** member. Usva Inei, a South East London queer visual artist and independent art-based researcher. Usva exhibited in hARTslane the year before and during a chat in the gallery they mentioned that New Cross is home to a large somehow hidden community of queer artists. We invited Usva to join us and to try to find ways together to make hARTslane a safe and welcoming space for the local LGBTQ+ creative community. Together we applied to and were successful in obtaining a Lendlease Deptford Landings Community Fund grant that is allowing us to produce an exhibition celebrating the local queer talent. We have now launched the **Invisible Visible** Open Call and we can't wait to welcome everyone back at hARTslane in March 2024 at the opening of the Invisible Visible exhibition curated by Usva Inei.

Welcome back? Yes, hARTslane gallery is currently closed as we are carrying out **internal repair works**. As our plans for refurbishment were affected by objections to our Planning Application, we had to split the works in 2 phases.

Phase 1 started in December and concerns work internally such as the levelling of the floor and the strengthening of the wall foundations.



This phase also involves creating an accessible toilet at the back. The good news is, we already had some funding in place for the works and thanks to an additional grant from Lewisham Council, we have the budget to cover Phase 1. We closed the gallery in November and the works are now in full swing. We plan to carry out works in phase 2 once our planning application is approved for the mezzanine and we will have raised the funds (more about the works on pg 11).

In 2023, we had plans for what we called the **Dinner Art Project**, a series of food based events commissioned to artists whose practice involves food and commensality. Unfortunately our application to the Arts Council England wasn't successful and we decided to self-fund a pilot event to test the 'appetite' of our audiences and partners for the idea of experimenting with food and art in hARTslane. We worked with artists Fatima Alaiwat & Barney Pau to create a project in collaboration with plot holders at the Deptford Royal Naval Place Allotments. In September we harvested ripe tomatoes and purple velvet grapes, that Fatima and Barney turned into a 3 course meal and a non alcoholic Champagne. We believe the pilot was a great success and we are now in the process of writing an application to obtain the funding to run more food art events with more artists and allotments.

In 2023 we also continued to produce **Gravel**, our ongoing live work programme curated by Rachel Lonsdale, Max Melvin and Sarah-Athina Nahas. We run 2 successful editions which were co-curated by 2 inspiring artists: Siin Lin and Jinia Tasnin. *In the pit of the Waters Tongue* event was the first Gravel event where we ran an archive workshop a week later. Artists returned to hARTslane and reflected in the site where they had performed.

After 6 events, we are pausing Gravel as Rachel and Sarah are now focusing on a new exciting adventure, **HA! hARTslane Alternative**, an alternative MA fine art programme for creatives who want to come together to develop their practice, network and explore different ways to live life as an artist in London. We launched an open call in December 2023 and have had over 30 artists responding. The next stage will be selecting the 8 artists and our school will be taking place between April and July 2024.

Gravel is not the only project we are pausing. Due to lack of resources, **Be Seen Be Heard** will be put on hold in 2024. We will still maintain the platform alive by replying to emails and sharing opportunities with the network, but we won't be actively seeking to produce new projects.

Lastly, in 2023 we continued to curate the open platform for submitting proposals for exhibitions in hARTslane. We have a policy to 'say yes to artists' (see pg 5) regardless of CV or art backgrounds. During the last 12 months, we facilitated **32 group exhibitions/events** in the space, working with a total of 149 artists (see list of events on pg 9).

# AT A GLANCE

149

ARTISTS WE  
WORKED WITH

123

DAYS IN WHICH  
HARTSLANE WAS  
USED OR OPEN TO  
THE PUBLIC

32

EVENTS &  
EXHIBITIONS  
HOSTED

20

ARTISTS  
PERFORMING @  
GRAVEL V & VI

6

WORKSHOPS/  
SCREENINGS

4

FUNDING  
APPLICATIONS  
SUBMITTED / 2  
SUCCESSFUL

4

WEEKS OF  
BUILDING REPAIR  
WORKS IN THE  
GALLERY

471

BRICKS REMOVED  
FROM THE BACK  
WALL





## POLICY TO SAY 'YES' TO ARTISTS

### Introduction

Artists play a vital role in our society. They enrich our lives with their creativity, challenge our thinking, and inspire us to see the world in new ways. This policy document is a commitment to saying yes to artists and supporting their work at hARTslane.

### Rationale

There are many reasons to say yes to artists. Firstly, artists are essential to a thriving cultural sector. The arts contribute to our social and emotional well-being. Studies have shown that exposure to the arts can reduce stress, improve mental health, and promote social cohesion. Secondly, artists are art experts. We trust them to show us the way by pushing the boundaries of what is possible and help us imagine a better future. Finally, artists are members of our communities and they are a vehicle for expressing universal emotions in ways that are relevant to our community.

### Policy Goals

The goals of this policy are to:

- Increase artists' agency and give them more voice on what should happen inside galleries.
- Increase access to the arts for everyone, regardless of their background or income.
- Support the development and production of new and innovative artistic work.
- Create a more welcoming and supportive environment for artists to live and work in.
- Programme art that is relevant to multiple and diverse audiences

### Policy Actions

The following are some specific actions that hARTslane will take to implement this policy:

- Operate an open exhibition submission platform and only say no if the proposal or artwork is derogatory or against hARTslane's Equality, Diversity and Inclusion Policy.
- Create and deliver exhibition & project open calls where all entries are accepted as long as they are not derogatory or against hARTslane's Equality, Diversity and Inclusion Policy.
- Create a more accessible and efficient process for artists to respond to our open calls or submit proposals.

### Conclusion

This policy document is a call to action for everyone at hARTslane to say yes to artists. We must create a society where artists are valued and supported, and where everyone has the opportunity to experience the power of the arts.



THE DINNER ART PROJECT  
SATURDAY 23 SEPTEMBER

INTIMATE  
INGESTING;  
INGESTING  
INTIMACY

BY ARTISTS FATIMA  
ALAIWAT & BARNEY PAU

*CREATING THREE DIFFERENT  
DISHES ALL USING THE SAME  
INGREDIENTS, EXPLORING  
THE VARIETY THAT CAN BE  
FOUND IN REPETITION.*







**IN COLLABORATION WITH:  
DEPTFORD ROYAL NAVAL  
PLACE ALLOTMENTS**

**SUPPORTED BY GS WINES  
& BOLD VISION**



Rather than focussing on the novelty of an array of different foods, the event on the 23rd of September focused on repetition as a means of care and intimacy. The artists explored ways of activating food/eating as practise for relearning, reinvesting and rewilding things we care for. Over the course of the event, Fatima and Barney created 3 different foods, all using the same ingredients, to focus on the variability that can be found in repetition. These took place on the hour.

One part was about the physicality of eating; one about provenance; one about a poetic intervention. The intention was to explore how these three separate approaches invite modes of intimacy in ingesting.

The event was a success and we will use the feedback collected to inform our new project application for more dinner art events in 2024.





# GRAVEL

ONGOING LIVE WORK  
PROGRAMME

RUN BY RACHEL LONSDALE,  
SARAH NAHAS & MAX MELVIN

Every two months at the hARTslane gallery we host an evening of live art. This is an event showcasing a small group of 6-8 artists who experiment with live and performance based work. Each artist is given a 10-15 minute slot - there is no pressure for finalised work and we encourage snippets and works in progress. Each GRAVEL event includes a diversity of live art: sound art, spoken word, happenings, improvisation, drawing, dance and meditation.

**GRAVEL V**  
**SATURDAY 18TH OF MAY 2023**

**PIT OF THE WATER'S TONGUE**

**GUEST CURATOR: SIIN LEE**

**ARTISTS:**

NIAMH HANNAFORD  
CLAUDIA RAMIREZ  
RUBY REDING  
AIMÉE LYON  
RACHEL LONSDALE AND MAX MELVIN  
SHUYI GAO  
CHLOE KELLY  
MICHAL ADAMCZEWSKI AND SARAH-  
ATHINA NAHAS

**GRAVEL VI**  
**SATURDAY 1 JULY 2023**

**MOLASSES VASES**

**GUEST CURATOR: JINIA TASNIN**

**ARTISTS:**

KELVIN ATMADIBRATA  
MARIIA ANNENKOVA  
KELLY WU & JOE ACKERLEY  
SARAH-ATHINA NAHAS & MICHAL  
ADAMCZEWSKI  
JINIA TASNIN  
MAX MELVIN  
RACHEL LONSDALE  
LAISUL HOQUE



**hARTslane OPEN is an ongoing programme of art events facilitated in hARTslane and open to submission.**

The gallery space is available for group art exhibitions and events, creative workshops and short term studio.

We are committed to supporting work that intends a social impact and forging meaningful relationships with our locality, its residents and the wider civil society.

Our cultural programme aims to make the art world more transparent and accessible both for artists and the community. We have a policy to 'say yes to artists', regardless of CV or art backgrounds.



LOCK YOUR FULL POTENTIAL, CAMILLE ABOUDARAM

## CALENDAR EVENTS FROM OUR OPEN PROGRAMME 2023

### FEBRUARY

**Grey Area**, group exhibition

**Bottleneck**, group exhibition

**A Mere Interlude**, group exhibition

### MARCH

**Overflow**, group exhibition

**Glu**, group exhibition

**ONTOGENESIS**, group exhibition

**Documentary Vision**, group exhibition

### APRIL

**Knowing its the last time you'll swim**, group exhibition

**Double Room**, group exhibition

**Between worlds**, group exhibition

### MAY

**Approximate Distance**, group exhibition

**Things we did and didn't do**, group exhibition

**Entwined Intimacies**, group exhibition

**Lock your Full Potential**, from the series How to Fight Capitalism from Within (2023) LED lightbox, vinyl.

**Tap Out Festival**, performance, Theatre Department, Goldsmiths University





## JUNE

**LATAMesa**, workshop & exhibition bringing together artists from the Latin American Community.

**Mapping Futures**, Goldsmiths BA Anthropology and Visual Practice Degree Show

## JULY

**Quiet**, group exhibition

## SEPTEMBER

**Circularity/Цикличность**, group exhibition

**Awe & Action**, group exhibition

**Vervreemd**: 6 films representing change in landscape. Amsterdam based platform DWARS30A is hosting a film screening, bringing together an array of Dutch and British filmmakers

## OCTOBER

**Contradictions**, Screening with Deptford Cinema. A hybrid between film and performance art

**In Days of Heatwave**, group exhibition

**Triptych: A Visual Odyssey**, group exhibition







## PHASE 1 WORKS AT HARTSLANE: DECEMBER 2023-FEBRYARY 2024 SUPPORTED BY NCIL & UKSPF EMPTY PROPERTY GRANT

1. Upgrade of Existing Toilet Facilities: Transformation of a derelict and inaccessible outdoor restroom into a fully compliant wheelchair-accessible internal facility, aligning with the Equality Act 2010.
2. Level and Upgrade the Existing Uneven Floor: To build the floor up in the front and central areas to be level with the floor in the back area.
3. Relocation and Reconstruction of Current Storage/Kitchen Space: Moving the storage area from the front to the back area.
4. Installation of New Guttering and Roof over the Entrance area: This will enhance the structural integrity and repair any leaks.
5. Replacement of Roof Lights: To optimize natural lighting within the premises.
6. Underpinning and strengthening of wall foundations.
7. Implementation of New Drainage for Toilet and Kitchen: Ensuring efficient wastewater management.
8. Electrical work; (emergency lighting, fire alarm system, sockets, etc)
9. Completion of a New Fire Risk Assessment: Including the provision of two new fire extinguishers and requisite signage.
10. Commissioning of a Health & Safety Audit: A comprehensive review to ensure the highest standards of safety compliance.



# ABOUT HARTSLANE

## **DIRECTORS**

Cristiana Bottigella  
Sigrun Sverrisdottir  
Tisna Westerhof

## **PROJECT COORDINATOR**

Rachel Lonsdale

## **ACCOUNTANT**

Martin Connell

## **ADVISORY GROUP**

Fred Agbah  
Deborah Ajia  
Guy Forrester  
David Holloway OBE  
Anthea Hudson  
Usva Inei  
Martin Okoli  
Shamina Peerboccous  
Francesca Telling

## **GRAVEL**

Curated by Rachel Lonsdale, Max  
Melvin and Sarah Nahas

## **BE SEEN, BE HEARD**

Coordinator Jada Parry  
Assistant coordinator: Flynn Richards

## **HA! Hartslane Alternative**

Rachel Lonsdale and Sarah Nahas